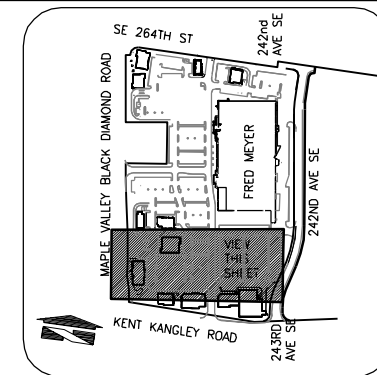
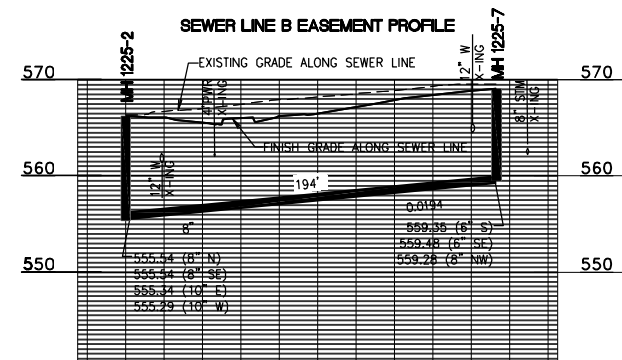
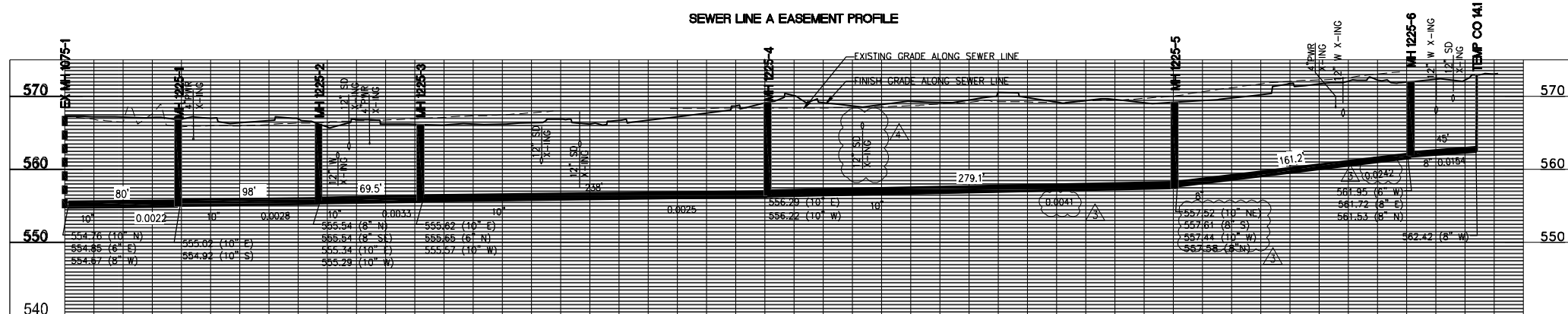


CIVIL SANITARY SEWER PLAN AND PROFILE



KEYMAP
NOT TO SCALE



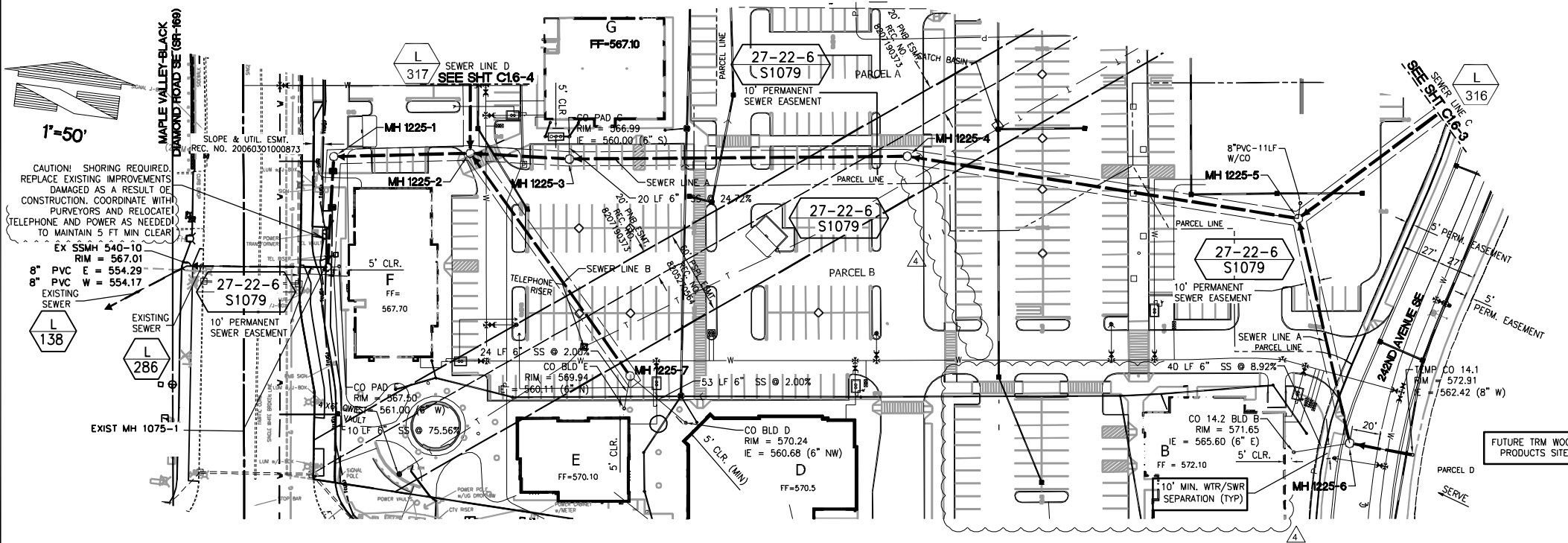
NOTE: VERIFY EXISTING PIPE INVERT ELEVATIONS PRIOR TO START OF CONSTRUCTION

NOTE: CAUTION! VERIFY AND LOCATE PROPOSED SEWER MINIMUM 5 FT CLEAR OF BURIED ELECTRICAL AND TELEPHONE CABLES

NOTE: POSITION MANHOLE RIM OPENING TO BE 3 FT MINIMUM CLEAR OF CURB (TYPICAL)

SANITARY SEWER STRUCTURE

STRUCTURE	COORDINATE	LOCATION
EX MH 1075-1	N = 134343.10 E = 1346115.7894	
MH 1225-1	N = 134420.79 E = 1346110.1409	
MH 1225-2	N = 134435.55 E = 1346205.2022	
MH 1225-3	N = 134440.49 E = 1346274.9441	
MH 1225-4	N = 134473.03 E = 1346510.7589	
MH 1225-5	N = 134464.99 E = 1346789.5562	
MH 1225-6	N = 134312.91 E = 1346845.7947	
MH 1225-7	N = 134294.56 E = 1346337.0535	
MH 1225-9	N = 134593.52 E = 1346921.3884	



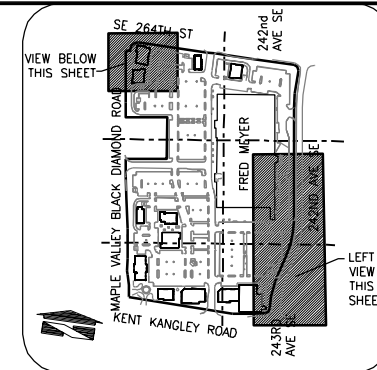
DATE APPROVED	PRINCIPAL APPROVAL	DESIGN	DRAWN	CHECKED	JOB NO.
DATE	DESCRIPTION	REVISIONS			
2	CFB 04-27-11 PER DISTRICT REVIEW				
1	CFB 03-01-11 PER DISTRICT REVIEW				
	NO. BY DATE				

DATE	DES. FLD. BK. NO.	PG.
SCALE	HORIZ: 1"=10'	VERT: 1"=10'

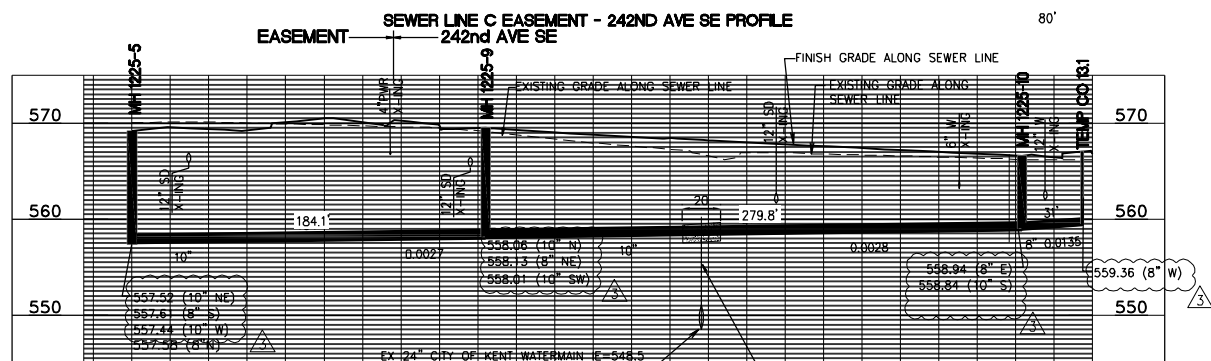
BASE MAP	Q-19
SHEET	C1.6-2 ^{OF} 7
DRAWING	L-315

PLOTTING DATE: 10/9/2017 11:15 AM USER: Miroslav, Isabella
 FILE NAME: G:\08-2017-Doc\comm-rc\PDFS\12308-S1-3.dwg

CIVIL SANITARY SEWER PLAN AND PROFILE

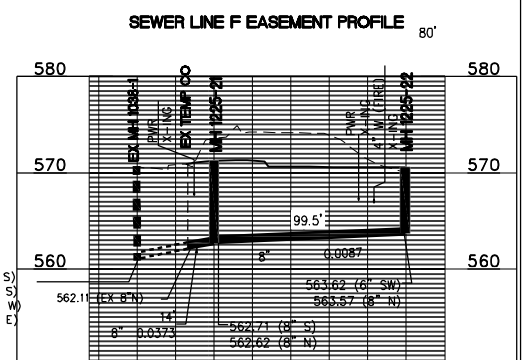


KEYMAP
NOT TO SCALE

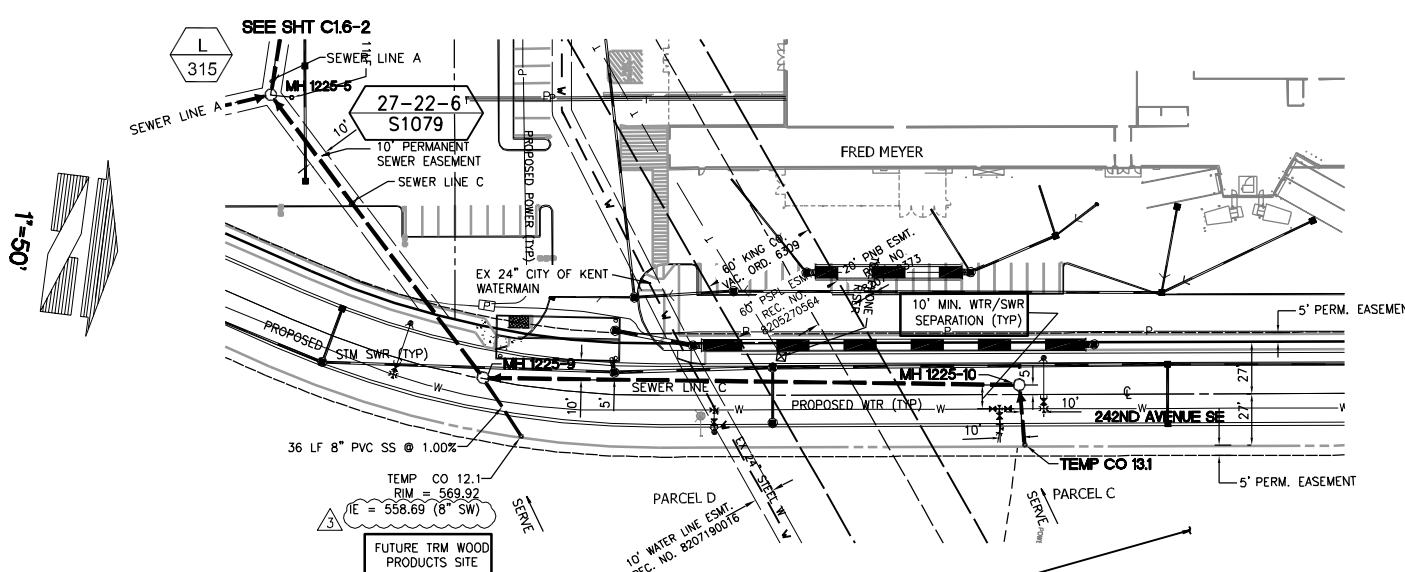


EX 24" CITY OF KENT WATERMAIN E=548.5
(IE BASED UPON INTERPOLATION OF CITY OF KENT POT HOLE LOCATE AND SURVEY INFO PROVIDED JULY 02, 2009)

- NOTE:
1. FIELD VERIFY LOCATION, COORDINATE WITH CITY OF KENT AND CONFIRM CROSSING REQUIREMENTS
 2. SEWER LINE SHALL BE CONSTRUCTED OF POLYVINYL-CHLORIDE C 900" OR DUCTILE IRON C 151 AND C 104. THE ONE SEGMENT OF THE MAXIMUM STANDARD LENGTH OF PIPE (BUT NOT LESS THAN 18 FEET LONG) SHALL BE USED WITH THE PIPES CENTERED OVER 24" WATER MAIN TO MAXIMIZE JOINT SEPARATION.
 3. STANDARD GRAVITY-SEWER MATERIAL SHALL BE ENCASED IN CONCRETE (CDF) 12" MINIMUM THICKNESS FOR MINIMUM DISTANCE OF 10 FEET ON EITHER SIDE OF THE WATER MAIN.
 4. THE LENGTH OF SEWER PIPE SHALL BE CENTERED AT THE POINT OF CROSSING SO THAT THE JOINTS WILL BE EQUIDISTANT AND AS FAR AS POSSIBLE FROM THE WATER LINE. THE SEWER PIPE SHALL BE THE LONGEST STANDARD LENGTH AVAILABLE FROM THE MANUFACTURER



NOTE: VERIFY EXISTING PIPE INVERT ELEVATIONS PRIOR TO START OF CONSTRUCTION

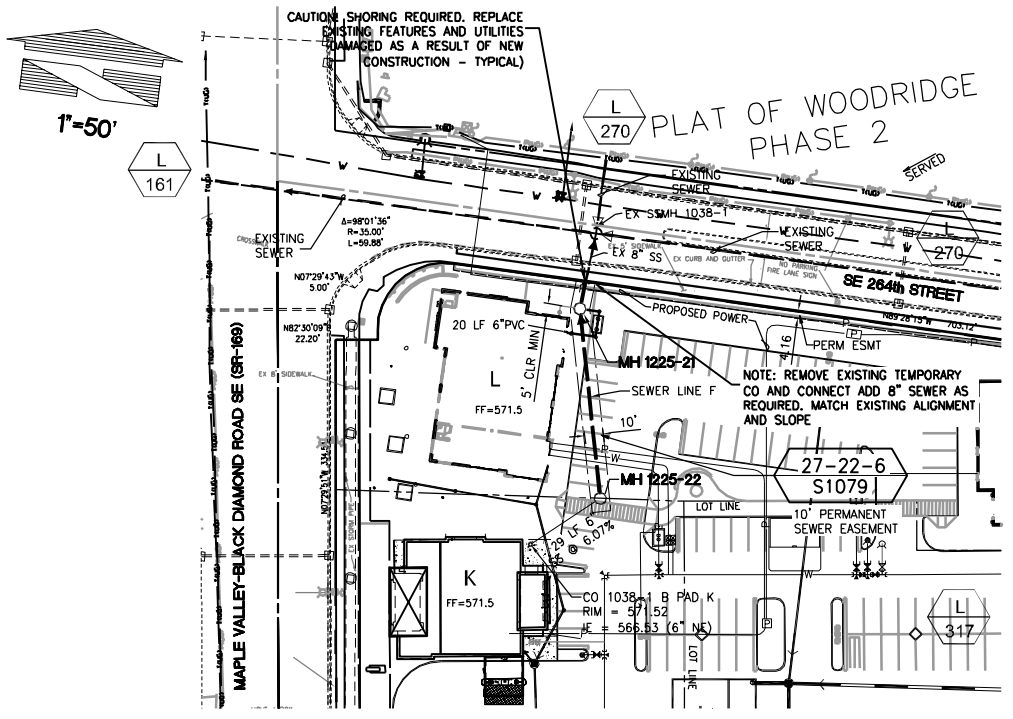


SANITARY SEWER STRUCTURE COORDINATE LOCATION TABLE

MH 1225-10	N= 134870.79	E= 1346889.0963
MH 1225-11	N= 134627.59	E= 1346179.6705
MH 1225-21	N= 135448.34	E= 1346069.4866
MH 1225-22	N= 135351.77	E= 1346092.7393

NOTE: 6" S.S. STUB CO ELEVATIONS SHOWN ARE PER FINAL DESIGN PLANS.

NOTE: MAINTAIN 10' MIN. WATER / SEWER SEPARATION (TYP.) UNLESS OTHERWISE SHOWN.

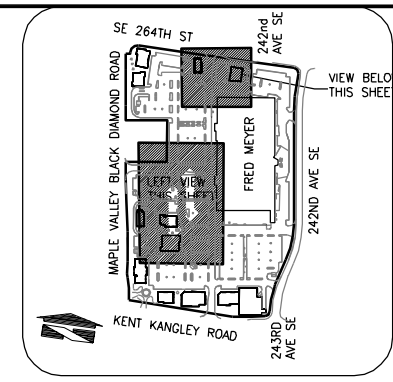


NOTE: CAUTION! VERIFY AND LOCATE PROPOSED SEWER MINIMUM 5 FT CLEAR OF BURIED ELECTRICAL AND TELEPHONE CABLES

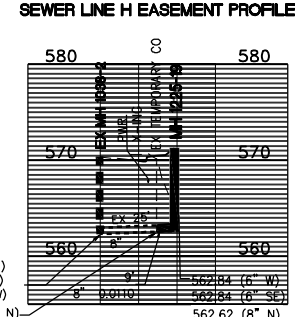
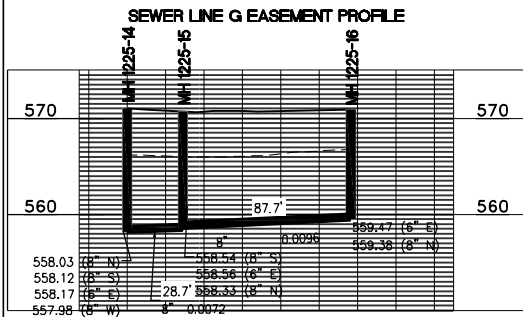
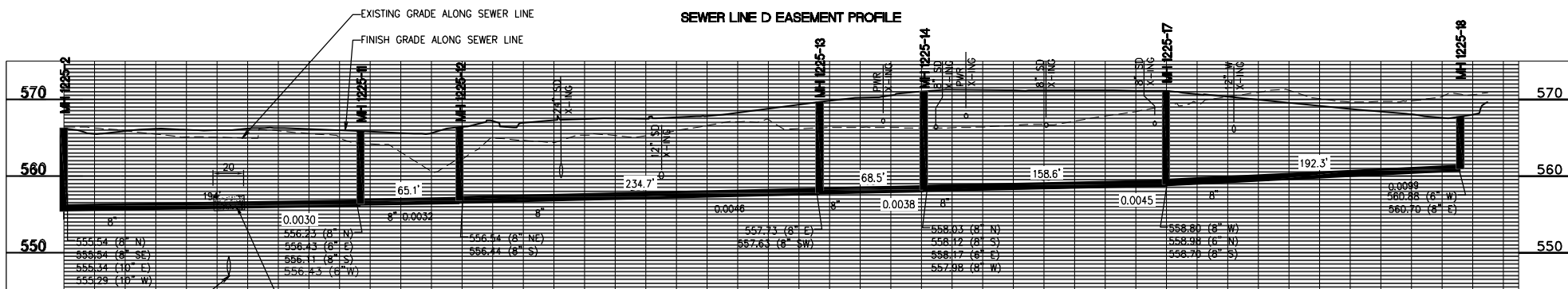
NOTE: CAUTION! SET MANHOLE 1225-21 10FT CLEAR OF BURIED ELECTRICAL AND TELEPHONE CABLES

DATE APPROVED	PRINCIPAL APPROVAL	DESIGN	DRAWN	CHECKED	JOB NO.
DES. FLD. BK. NO.	CST. FLD. BK. NO.	SCALE	HORIZ. SCALE	VERT. SCALE	
		1"=50'	1"=10'	1"=10'	
SOOS CREEK WATER & SEWER DISTRICT					
SEWER MAIN EXTENSION EXAMPLE - COMMERCIAL SEWER PLAN AND PROFILE					
BASE MAP	Q-19				
SHEET	C1.6-3F	7			
DRAWING	L 316				
NO. BY DATE	PER DISTRICT REVIEW	PER DISTRICT REVIEW	DESCRIPTION	REVISIONS	
2	CFB 04-27-11	1	CFB 03-01-11		

CIVIL SANITARY SEWER PLAN AND PROFILE

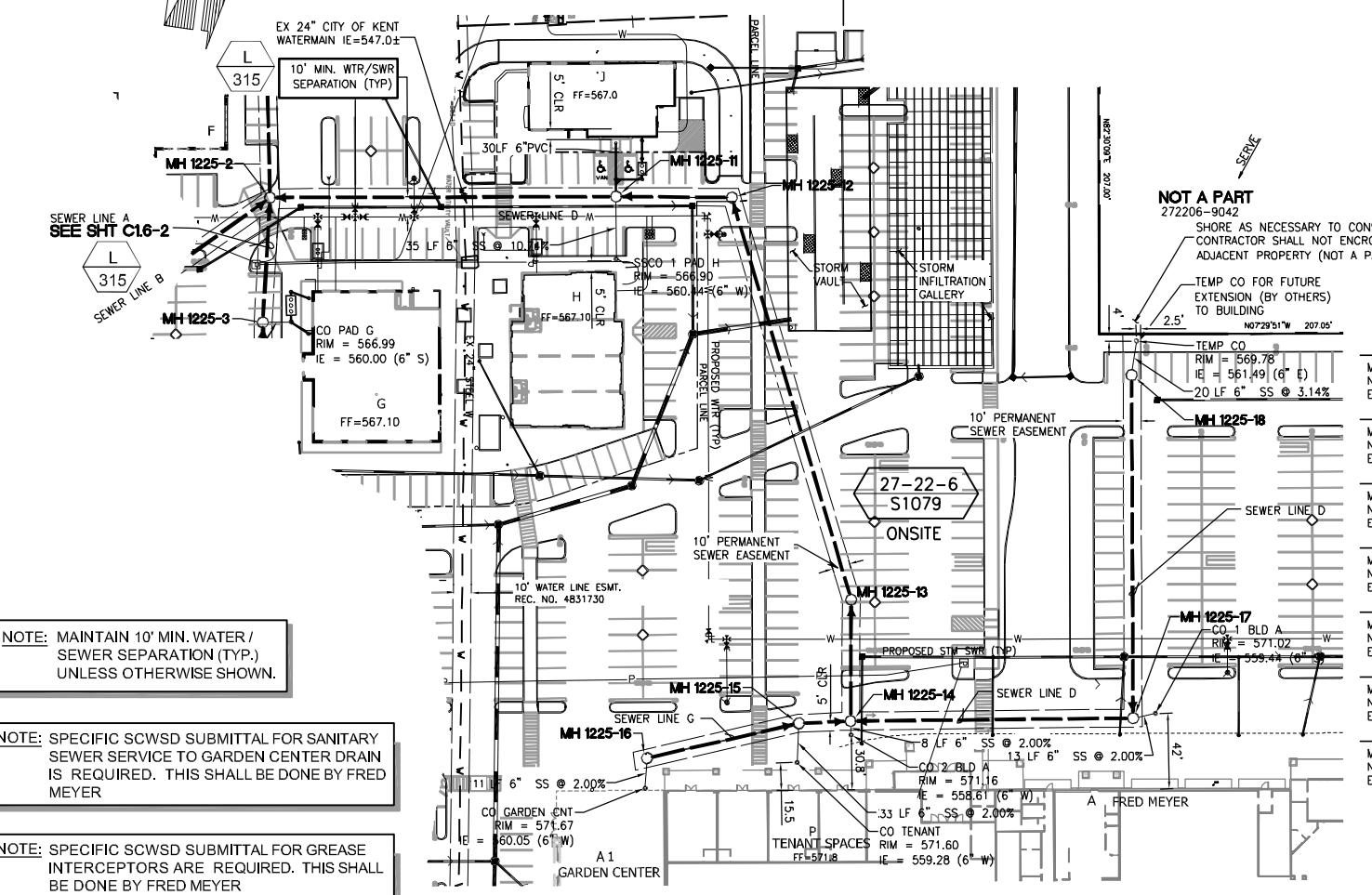
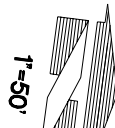


NO.	BY	DATE	DESCRIPTION
1	CFB	04-27-11	PER DISTRICT REVIEW
2	CFB	04-27-11	PER DISTRICT REVIEW
3	CFB	03-01-11	PER DISTRICT REVIEW



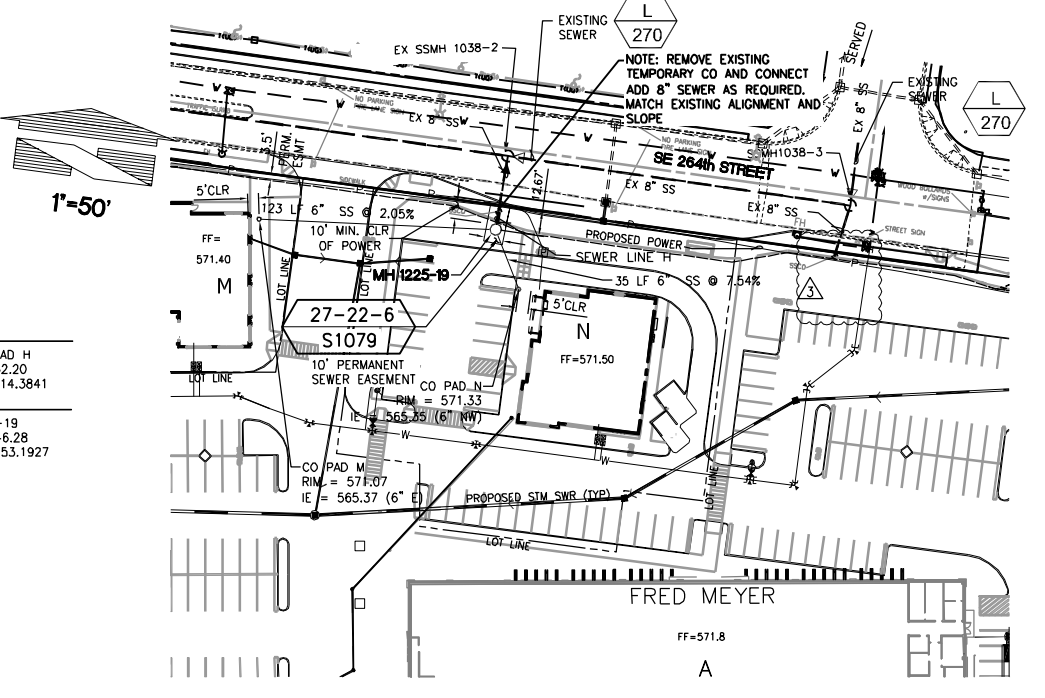
- NOTE:
- FIELD VERIFY LOCATION, COORDINATE WITH CITY OF KENT AND CONFIRM CROSSING REQUIREMENTS
 - SEWER LINE SHALL BE CONSTRUCTED OF POLYVINYL-CHLORIDE C 900 OR DUCTILE IRON C 151 AND C 104. THE ONE SEGMENT OF THE MAXIMUM STANDARD LENGTH OF PIPE (BUT NOT LESS THAN 18 FEET LONG) SHALL BE USED WITH THE PIPES CENTERED OVER THE 24" WATER MAIN TO MAXIMIZE JOINT SEPARATION.
 - STANDARD GRAVITY-SEWER MATERIAL SHALL BE ENCASED IN CONCRETE (CDF) 12" MINIMUM THICKNESS FOR MINIMUM DISTANCE OF 10 FEET ON EITHER SIDE OF THE WATER MAIN.
 - THE LENGTH OF SEWER PIPE SHALL BE CENTERED AT THE POINT OF CROSSING SO THAT THE JOINTS WILL BE EQUIDISTANT AND AS FAR AS POSSIBLE FROM THE WATER LINE. THE SEWER PIPE SHALL BE THE LONGEST STANDARD LENGTH AVAILABLE FROM THE MANUFACTURER

EX 24" CITY OF KENT WATERMAIN IE=547.0± (IE BASED UPON INTERPOLATION OF CITY OF KENT POTHOLE LOCATE AND SURVEY INFO PROVIDED JULY 02, 2009)



SANITARY SEWER STRUCTURE COORDINATE LOCATION TABLE

MH 1225-12	SSCO 1 PAD H	N = 134691.89	E = 1346171.8409
MH 1225-13		N = 134787.23	E = 1346386.6437
MH 1225-14		N = 134795.67	E = 1346454.1267
MH 1225-15		N = 134767.12	E = 1346459.0610
MH 1225-16		N = 134685.22	E = 1346489.4144
MH 1225-17		N = 134952.33	E = 1346432.0703
MH 1225-18		N = 134926.70	E = 1346241.6603
MH 1225-19		N = 134632.20	E = 1346214.3841



NOTE: MAINTAIN 10' MIN. WATER / SEWER SEPARATION (TYP.) UNLESS OTHERWISE SHOWN.

NOTE: SPECIFIC SCWSD SUBMITTAL FOR SANITARY SEWER SERVICE TO GARDEN CENTER DRAIN IS REQUIRED. THIS SHALL BE DONE BY FRED MEYER

NOTE: SPECIFIC SCWSD SUBMITTAL FOR GREASE INTERCEPTORS ARE REQUIRED. THIS SHALL BE DONE BY FRED MEYER

NOTE: CAUTION! VERIFY AND LOCATE PROPOSED SEWER MINIMUM 5 FT CLEAR OF BURIED ELECTRICAL AND TELEPHONE CABLES

NOTE: 6" S.S. STUB CO ELEVATIONS SHOWN ARE PER FINAL DESIGN PLANS.

NOTE: CAUTION! SET MANHOLE 1225-19 10 FT CLEAR OF BURIED ELECTRICAL AND TELEPHONE CABLES

NOTE: VERIFY EXISTING PIPE INVERT ELEVATIONS PRIOR TO START OF CONSTRUCTION

SOOS CREEK WATER & SEWER DISTRICT
SEWER MAIN EXTENSION EXAMPLE - COMMERCIAL SEWER PLAN AND PROFILE

BASE MAP	Q-19
SHEET	C1.6-4 OF 7
DRAWING	L 317