



Re-Elected Commissioner Alice Marshall

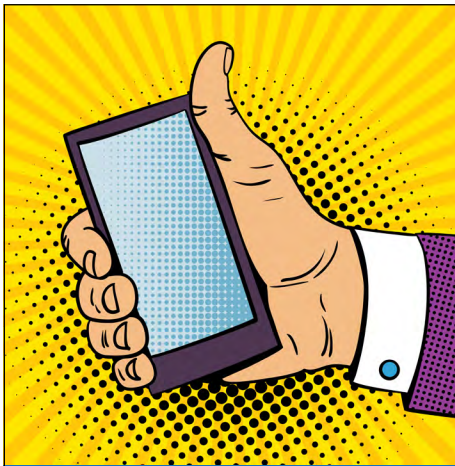
Commissioner Alice Marshall was re-elected to the SCWSD Board of Commissioners. With 43 years of experience in the water and sewer industry and 26 years as a Soos Creek employee, Alice has the background needed to meet the future challenges of the District. Her experience has prepared her to provide a well-rounded knowledge of water and sewer operations, District policy, its history, and an understanding of future needs.

Soos Creek Water and Sewer District has a unique boundary, overlapping 6 cities and unincorporated King County. Alice has the knowledge to work with each jurisdiction, providing service to the communities the district serves and balancing the impact on ratepayers.

A lifelong western Washington resident, Alice has lived within the Soos Creek boundary for 32 years and has been a part of the Kent business community for 12 years. Alice looks forward to continuing to represent the community and serving as your Commissioner.



Commissioner Alice Marshall



Please help us keep you informed

Keeping you informed during water and sewer related events is very important to us. Please update your contact information so that we can quickly inform you about any water or sewer related emergencies. Contact us at: 253-630-9900 (press 3) or email us at customer_service@sooscreek.com and update your phone, mailing and email addresses.

Sewer Pipes Don't Like Grease

Your drains connect to the sewer system, and grease will clog it up. Here are some important tips to remember...

- Scrape, freeze and put grease in the trash. The best way to get rid of grease is an airtight container in the garbage.
- Soap and detergents DO NOT permanently break up grease. They may initially move grease into your drain but grease will solidify again as it travels, causing clogs further down the line.
- Garbage disposals DO NOT get rid of grease. They only shred leftover fat.
- Running hot tap water DOES NOT help. The grease will cool down and harden as it moves through pipes.
- Liquid oils CAN solidify. Olive oil, for example, can solidify in pipes as temperatures are often lower in the pipes than inside your house. This is especially true in winter.



Any sort of grease is dangerous for your pipes. Remove all accumulated grease from your cooking and contain it in an airtight container for disposal.

Soos Creek Water and Sewer Rates - 2024

The District works hard to provide excellent service at competitive rates and maintain efficiency and cost savings in our operations. The District is faced with the increasing need to replace aging infrastructure, to keep our water and sewer systems operating reliably into the future. At its December 20th Regular Meeting, the Board of Commissioners adopted rate increases for water and sewer services in 2024.

For residential customers, the increase to your water bill base rate is about \$1.59 per month, and your sewer base rate increase is about \$1.38 per month. King County's sewage treatment rate has also increased. That rate is set by the King County Council, not by Soos Creek Water & Sewer District.

The increases will be effective with the February 28, 2024 bi-monthly billing cycle. Despite these increases, the District water and sewer rates are still among the lowest in the region. Below are detailed 2024 bi-monthly water, sewer and street light rates.

The District offers a reduction in base water and sewer rates to eligible low-income seniors and persons with disabilities. Please see <https://www.sooscreek.com/billing-information> for more information.

SOOS CREEK WATER AND SEWER DISTRICT -BI-MONTHLY WATER RATES

	2023 Rate			2024 Rate		
	Res.	Comm.	Irrig.	Res.	Comm.	Irrig.
Bi-Monthly Meter Base Rates						
5/8" Meter	\$35.32	\$35.32	\$35.32	\$38.50	\$38.50	\$38.50
1 " Meter	47.52	47.52	47.52	51.80	51.80	51.80
1.5" Meter	89.69	89.69	89.69	97.76	97.76	97.76
2" Meter	140.29	140.29	140.29	152.92	152.92	152.92
3" Meter	258.28	258.28	258.28	281.53	281.53	281.53
4" Meter	427.03	427.03	427.03	465.46	465.46	465.46
6" Meter	848.77	848.77	848.77	925.16	925.16	925.16
Fire Meter (Flat Rate)	\$117.40	\$117.40	\$117.40	\$127.97	\$127.97	\$127.97
Consumption Rates per 100 cubic feet						
Winter Rate (Jan-May; Oct-Dec)						
0 - 1,000	\$2.34	\$2.34	\$7.56	\$2.55	\$2.55	\$8.24
1,000 - 2,000	4.59	4.59	7.56	5.00	5.00	8.24
2,001 - 3,000	5.78	5.78	7.56	6.30	6.30	8.24
Greater than 3,000	6.30	6.30	7.56	6.87	6.87	8.24
Summer Rate (Jun-Sep)*						
0 - 1,000	\$2.34	\$2.34	\$7.56	\$2.55	\$2.55	\$8.24
1,000 - 2,000	5.51	5.51	7.56	6.00	6.00	8.24
2,001 - 3,000	6.94	6.94	7.56	7.56	7.56	8.24
Greater than 3,000	7.56	7.56	7.56	8.24	8.24	8.24

* Summer conservation rates include a 20% surcharge after 1,000 cf, except irrigation.

Buying or Selling a Home?

To assist in a smooth transition regarding your utility bill, please follow these steps:

IF SELLING, please call us with the following information:

- Closing date
- Forwarding address for Final Bill
- Name of new owner

• **IF BUYING** a home in our service area, please:

- Email customer service at: customer_service@sooscreek.com before closing to advise us that you are moving in
- Provide us with the necessary billing information

• Inquire about any balance owing against the property

- Talk with your escrow agent to ensure that all unpaid bills are taken care of prior to or with the property loan closing



Soos Creek's Water & Sewer Rates - 2024 Continued

SOOS CREEK WATER AND SEWER DISTRICT - BI-MONTHLY SEWER RATES

	2023 Rate			2024 Rate		
	Base Rate - \$/Bi-Mth.			Base Rate - \$/Bi-Mth		
	SF & Multi-Family Res.	Comm. Base Rate	Comm. Volume Charge* \$/CCF	SF & Multi-Family Res.	Comm. Base Rate	Comm. Volume Charge*
Soos Creek						
For Maintenance of the Sewer System	\$45.84	\$45.84	\$3.06	\$48.59	\$48.59	\$3.24
KC Dept of Natural Resources						
For Treatment of the Sewage	\$104.22	\$104.22	\$6.95	\$110.22	\$110.22	\$7.35
Total Sewer Charges	\$150.06	\$150.06	\$10.01	\$158.81	\$158.81	\$10.59

* Volume Charge Rate per 100 cubic feet of water consumption in excess of the first 1,500. 100 cubic feet (CCF) of water = 748 gallons of water.

SOOS CREEK WATER AND SEWER DISTRICT - BI-MONTHLY STREET LIGHT RATES

	2023 Rate	2024 Rate
Bi-Monthly account charge	6.66	7.03

Water & Sewer Emergencies

Soos Creek Water and Sewer District takes pride in the service provided to our customers. The District has on-call personnel available to respond to any water or sewer related emergencies 24 hours a day, 7 days a week. An example of an emergency that could arise is a sewer back-up in your home.

The District is responsible for the sewer pipe in the street and to the stub which is typically at the property line. You, as the homeowner, are responsible for the side sewer line. If the back-up is a result of your side sewer being plugged, you would be responsible to relieve the back-up and any



damages to your home. If the back-up is in the street or beyond your property line, the District is responsible.

A good way to determine responsibility of the back-up is to monitor if the sewer is flowing into the house when you are not using any facilities. If this is the case, there is a high probability that the mainline is plugged and you must call the District immediately. If sewer is flowing into your home only when you are using the facilities, your side sewer is probably plugged, and you would be responsible.

If you experience a back-up in your home, we recommend that you call Soos Creek Water and Sewer District FIRST at (253) 630-9900. We will help you determine who is responsible for eliminating the problem.

SOOS CREEK WATER & SEWER DISTRICT

14616 SE 192nd St.
Renton, WA 98058-9420

customer_service@sooscreek.com

Phone: (253) 630-9900

Fax: (253) 630-5289

www.sooscreek.com

Commissioners

Gary Cline
Alice Marshall
Darold Stroud
Alan Eades
Logan Wallace

General Manager

Jane Vandenberg, PE

Regular Board of Commissioners Meetings are open to the public and are held the first, third and fourth Wednesdays of the month at 4:30 p.m.



The mission of Soos Creek, a public agency, is to provide reliable, high quality water and sewer services in an efficient, cost effective manner.