

SOOS CREEK WATER AND SEWER DISTRICT
KING COUNTY, WASHINGTON

Abbreviated
SIDE SEWER STANDARDS

to view full standards and details go to
www.sooscreek.com

SCWSD only allows the following

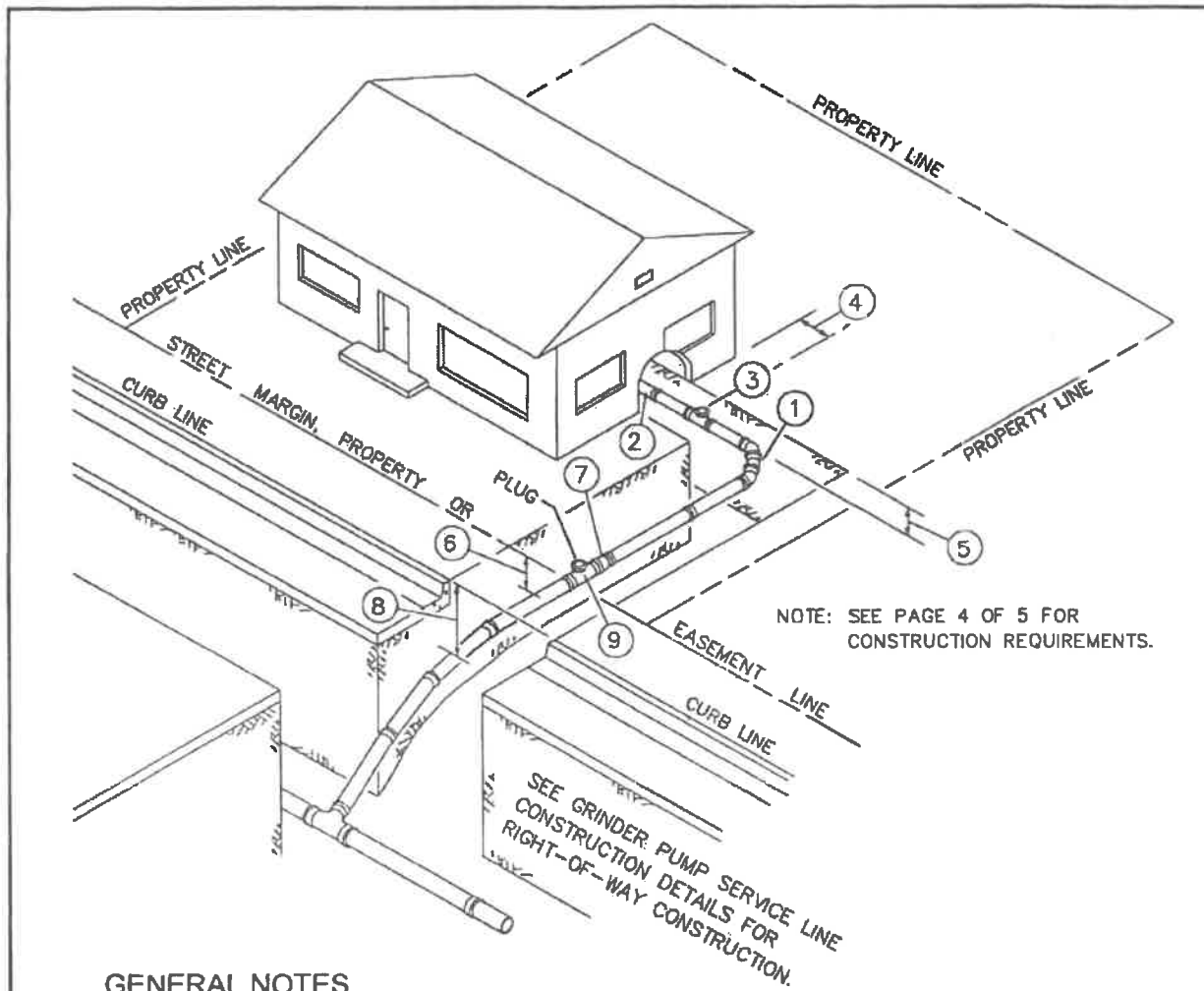
- Minimum 2% Fall

Pipe Fittings:

- Only gasketed, no glued fittings allowed
- Strongback fittings to 3' deep, after that, must use Romac fitting or approved equivalent

Pipe Bedding:

- 5/8" Crushed Rock OR Pea Gravel



NOTE: SEE PAGE 4 OF 5 FOR CONSTRUCTION REQUIREMENTS.

GENERAL NOTES

- ① 2 - 45° BENDS WITH 24" MIN. SEPARATION BETWEEN BENDS TO EQUAL 90° BEND.
- ② CONNECTION TO MAIN STACK FROM SIDE SEWER SHALL BE DUCTILE IRON OR PVC PIPE WITH A FLEXIBLE 2-BAND RUBBER COUPLING.
- ③ 4" WYE, TEE OR BACKWATER VALVE FOR CLEANOUT AND TESTING.
- ④ 48" MINIMUM OR 60" MAXIMUM DISTANCE FROM HOUSE. IF ACCESS IS PREVENTED BY PORCH OR DECKS, THEN SURFACE CLEAN-OUT IS REQUIRED (SEE DETAIL NO. 30).
- ⑤ 18" MINIMUM COVER.
- ⑥ 5'-0" MINIMUM BELOW STREET CENTERLINE OR 3'-6" MINIMUM BELOW EASEMENT LINE ELEVATION, WHICHEVER IS DEEPER @ THE PROPERTY OR EASEMENT LINE.
- ⑦ STANDARD 4" TO 6" INCREASER.
- ⑧ 6'-0" MINIMUM BELOW ROAD GRADE OR CURB LINE.
- ⑨ 6" x 6" x 6" TEE SHALL BE LOCATED INSIDE PRIVATE PROPERTY.



TYPICAL HOUSE CONNECTION FOR GRAVITY SEWER

| | | | |
|--|--------------|---------------------------|---------------------------------|
| REVISION DATE SEPT. 23, 2011 | SCALE NTS | DISTRICT APPROVAL K.V. | DATE APPROVED SEPT. 23, 2011 |
| FILE NAME M:\SOOS CREEK W&S\DESIGN STANDARDS\SWR DTLS\S-19A | | | DWG. NO. S-19A |

CONSTRUCTION REQUIREMENTS (STUB SERVICE)

(TO BE CONSTRUCTED BY DISTRICT OR DEVELOPER AS PART OF THE PROJECT)

1. 6" SEWER PIPE REQUIRED IN STREET AT 2% MINIMUM GRADE AND 200% MAXIMUM GRADE.
2. JOINTS MUST BE MADE W/RUBBER TYPE GASKET AS APPROVED BY DISTRICT.
3. ALL STUB SERVICES SHALL BE TESTED IN ACCORDANCE WITH THE DISTRICT'S SPECIFICATIONS PRIOR TO APPROVAL.
4. ALL MATERIALS USED IN THE CONSTRUCTION OF ANY STUB SERVICE SHALL HAVE PRIOR APPROVAL OF THE DISTRICT.
5. ALL CONSTRUCTION OF STUB SERVICES MUST COMPLY WITH SIDE SEWER RESOLUTION ADOPTED BY SOOS CREEK WATER AND SEWER DISTRICT BOARD OF COMMISSIONERS.

CONSTRUCTION REQUIREMENTS (SIDE SEWER)

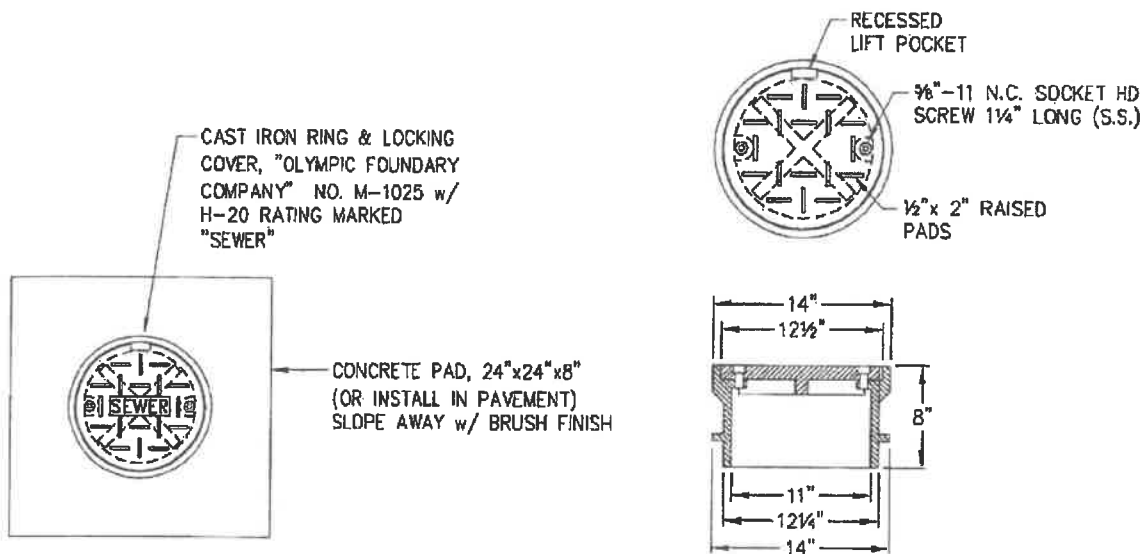
(TO BE CONSTRUCTED BY PROPERTY OWNER AFTER COMPLETION OF PROJECT)

1. SIDE SEWER SHALL BE CONNECTED TO STUB SERVICE WITH A 6"x6"x6" TEST TEE AND 6"x4" REDUCER, BY PROPERTY OWNER.
2. 4" MINIMUM SEWER PIPE REQUIRED ON PROPERTY. PERMIT REQUIRED.
3. 6" MINIMUM SEWER PIPE REQUIRED ON PROPERTY, FOR JOINT SIDE SEWERS. PERMIT AND JOINT SIDE SEWER AGREEMENT REQUIRED.
4. 2% MINIMUM GRADE (1/4" FALL PER FOOT); 200% MAXIMUM GRADE (24" FALL PER FOOT).
5. JOINTS MUST BE MADE W/RUBBER TYPE GASKET, APPROVED BY DISTRICT.
6. SEE GENERAL NOTES, PAGE 1 OF 5 – TYPICAL HOUSE CONNECTION.
7. CONSTRUCTION ON PRIVATE PROPERTY MAY BE DONE BY OWNER, BUT REQUIRES A PERMIT.
8. ALL MATERIALS USED IN THE CONSTRUCTION OF ANY SIDE SEWER SHALL HAVE PRIOR APPROVAL OF DISTRICT. PIPE TO BE CLASS 50 DUCTILE IRON, OR ASTM D-3034, SDR 35 PVC, OR SDR 11 HDPE FOR ALTERNATIVE SEWER SERVICE.
9. ALL SIDE SEWERS SHALL BE TESTED IN ACCORDANCE WITH THE DISTRICT'S SPECIFICATIONS PRIOR TO APPROVAL BY DISTRICT.
10. CONNECTIONS SHALL BE COMPLETE AT BOTH ENDS BEFORE CALLING FOR INSPECTION.
11. NO DOWNSPOUTS OR OUTSIDE DRAINS SHALL BE CONNECTED TO SANITARY SEWERS.
12. CLEAN-OUTS SHALL BE PROVIDED 48" MINIMUM TO 60" MAXIMUM FROM BUILDING AND SPACED AT 100' (MAXIMUM) INTERVALS UNLESS APPROVED BY DISTRICT.
13. ALL CONSTRUCTION OF SIDE SEWERS MUST COMPLY WITH SIDE SEWER RESOLUTION ADOPTED BY SOOS CREEK WATER AND SEWER DISTRICT BOARD OF COMMISSIONERS.
14. TWO 45' BENDS WITH 24" MIN. SEPARATION BETWEEN BENDS TO EQUAL 90° BEND.



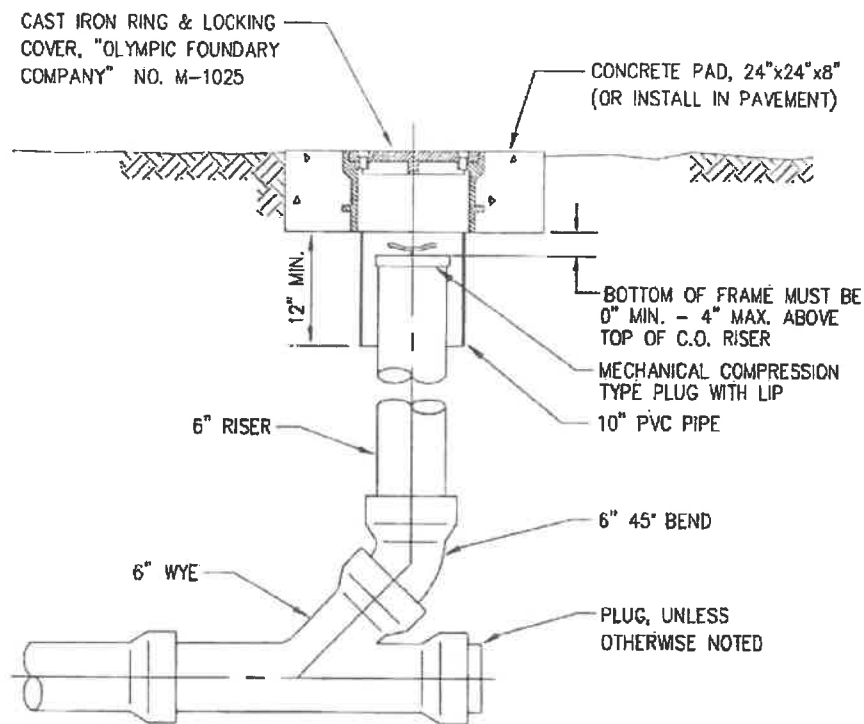
TYPICAL HOUSE CONNECTION CONSTRUCTION REQUIREMENTS

| | | | |
|--|--------------|---------------------------|---------------------------------|
| REVISION DATE SEPT. 23, 2011 | SCALE NTS | DISTRICT APPROVAL K.V. | DATE APPROVED SEPT. 23, 2011 |
| FILE NAME M:\SOOS CREEK W&S\DESIGN STANDARDS\SWR DTLS\S-19D | | | DWG. NO. S-19D |



PLAN

11"x8" LOCKING CLEANOUT



ELEVATION



**SURFACE CLEAN OUT
(MAINLINE STUB)**

| | | | |
|--|--------------|---------------------------|--------------------------------|
| REVISION DATE MAY 17, 2011 | SCALE NTS | DISTRICT APPROVAL K.V. | DATE APPROVED JUNE 02, 2011 |
| FILE NAME M:\SOOS CREEK W&S\DESIGN STANDARDS\SWR DTL\S-30 | | | DWG. NO. S-30 |